



DOMINATE EVERYDAY. YOUR WAY.



T H E  
**ix1**

LONG  
WHEELBASE

The city is now tamed.  
You have the power to dominate.  
The means to celebrate.

Step up to this wonder of versatility.  
Move up to this sanctuary of space.  
That effortlessly encircles  
A multitude of dreams  
While the city gives in  
To your every whim.

Let fingertips lead  
To a seamless world.  
Touch, engage, and connect  
As you employ and enjoy  
The all electric experience  
Of the BMW iX1 LWB.  
Rise, to conquer the urban jungle.  
Creatively. Consciously. Daily.



# EXTERIOR HIGHLIGHTS.

## ADAPTIVE LED HEADLIGHTS.

The best-in-class Adaptive LED Headlights on the iX1 LWB automatically adjust their beam pattern to suit changing driving conditions, improving nighttime visibility and giving you confidence and peace of mind on every drive.



## PANORAMA GLASS ROOF.

The BMW iX1 LWB features a 9-square-foot panorama glass roof, the largest in its segment, adding a sense of grandeur to the exterior and resplendence to the interior.



## 18" M ALLOY WHEELS.

The 18" 838M Bicolour Alloys lend an impressive aura to the iX1 LWB. Featuring 225/55/R18 tubeless tyres with a best in segment 124 mm sidewall height for maximum comfort.



# CLASS-LEADING TECHNOLOGY.

## COMFORT ACCESS AND DIGITAL KEY PLUS.

With BMW Digital Key Plus, you can use your smartphone or smartwatch to lock, unlock and even drive the vehicle instead of a traditional key as well as transfer the key with up to 4 people at a time.



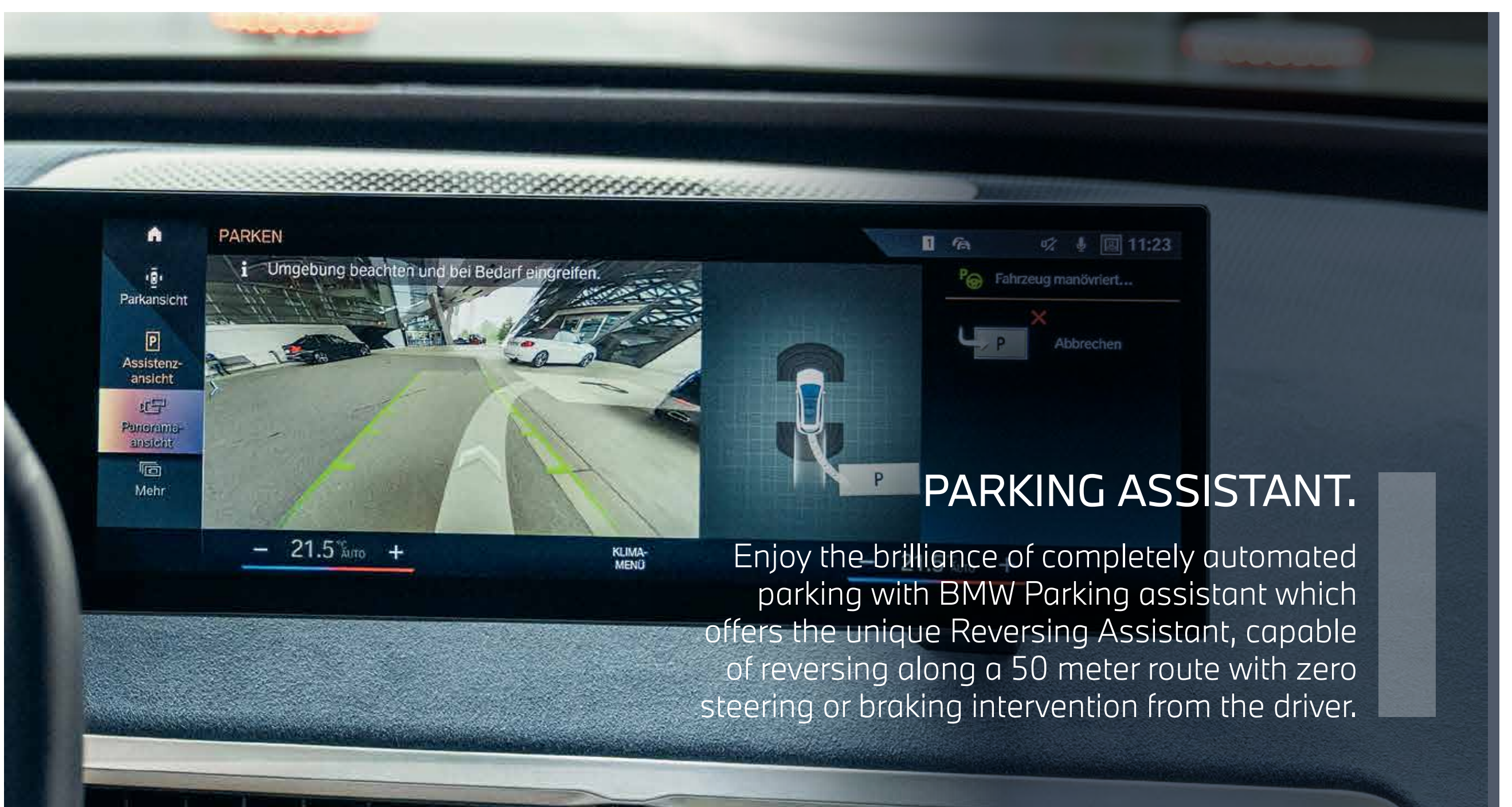
## DRIVING ASSISTANT.

The Driving Assistant on the iX1 LWB combines innovative features like Lane Departure Warning, Blind Spot Detection, and Rear Collision Warning to help keep you safe on the road. With the BMW Driving Assistant, you'll enjoy enhanced safety and peace of mind on every drive.



## PARKING ASSISTANT.

Enjoy the brilliance of completely automated parking with BMW Parking assistant which offers the unique Reversing Assistant, capable of reversing along a 50 meter route with zero steering or braking intervention from the driver.



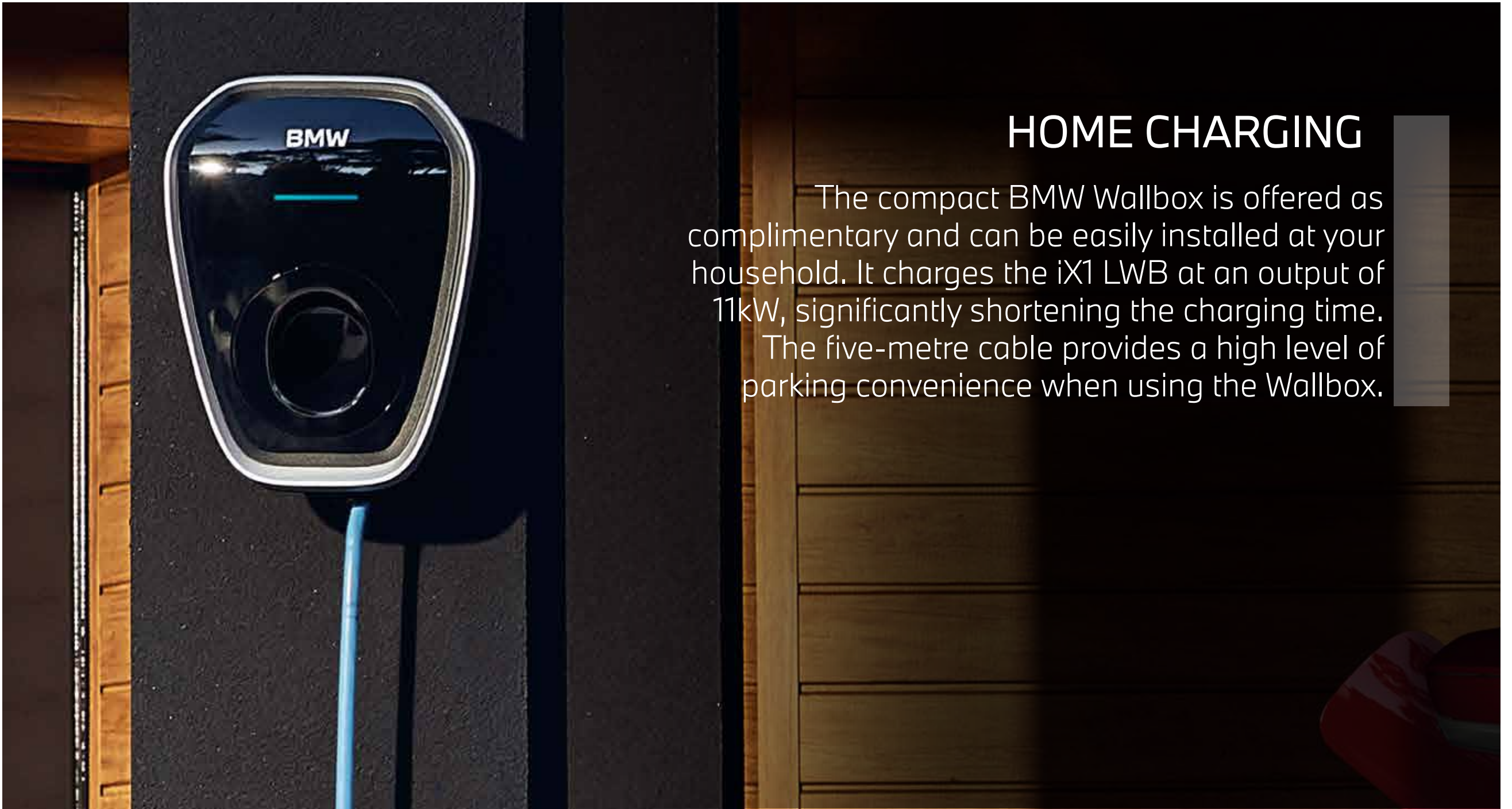
# UNRIVALED REAR COMFORT.

Upgrade to a new standard of rear seat comfort with the iX1 LWB. The rear bench with reclining seats is capable of reclining to a maximum angle of 28.5 degrees, making the iX1 LWB the perfect place to lean back and relax.

# BEST-IN-CLASS REAR LEGROOM.

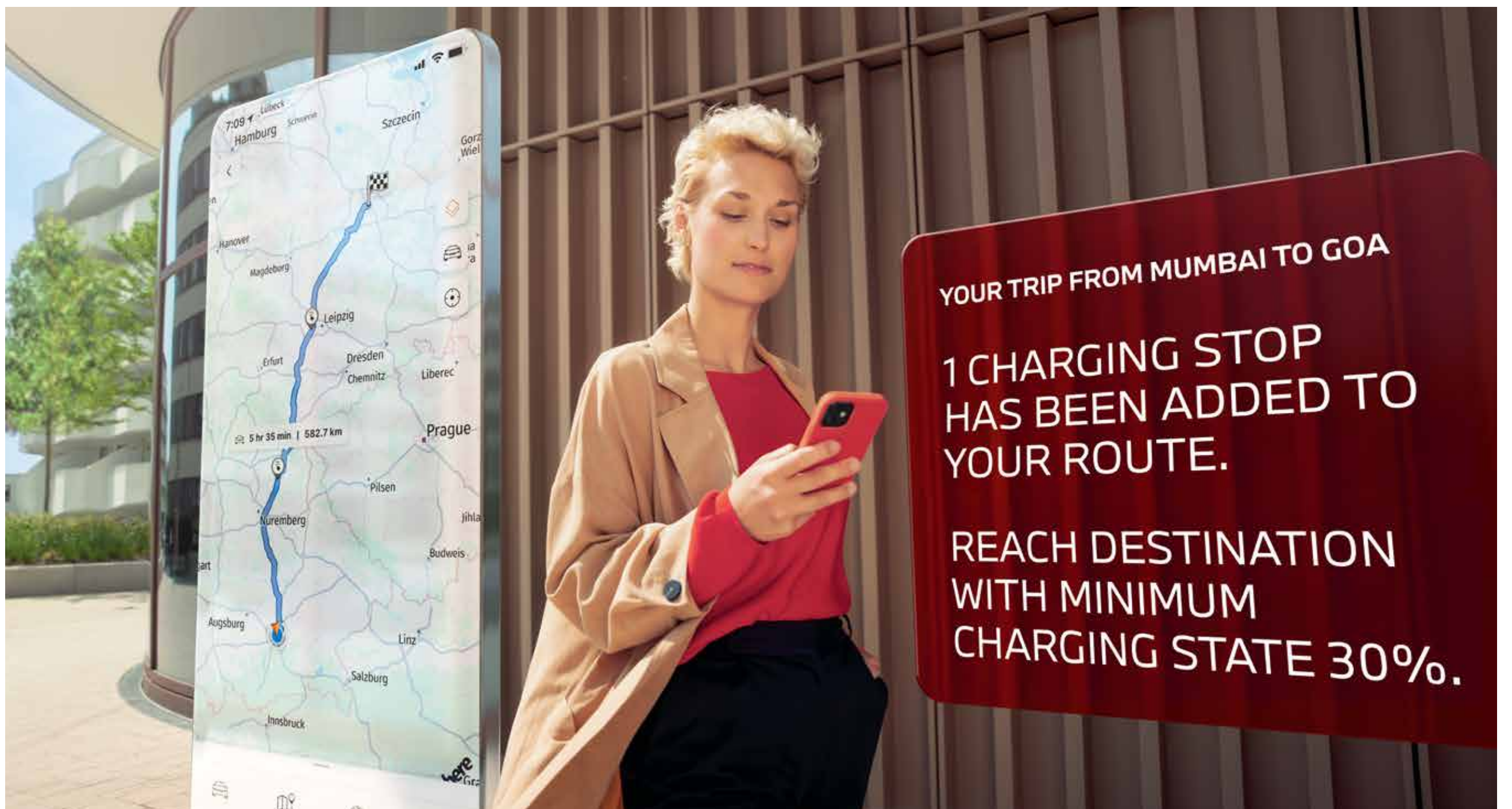
Indulge in exceptional rear-seat comfort in the BMW iX1 LWB, designed to pamper passengers. With generous legroom, ample knee space, and adjustable seating, rear occupants will enjoy a luxurious and relaxing experience. Perfect for road trips or daily commutes, the iX1 LWB redefines rear-seat comfort, ensuring every journey is a delight.

# CHARGING.



## HOME CHARGING

The compact BMW Wallbox is offered as complimentary and can be easily installed at your household. It charges the iX1 LWB at an output of 11kW, significantly shortening the charging time. The five-metre cable provides a high level of parking convenience when using the Wallbox.



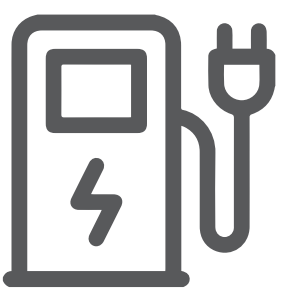
YOUR TRIP FROM MUMBAI TO GOA  
1 CHARGING STOP  
HAS BEEN ADDED TO  
YOUR ROUTE.  
REACH DESTINATION  
WITH MINIMUM  
CHARGING STATE 30%.

## E-ROUTE TRIP PLANNING.

Get seamless & efficient route planning on the My BMW App, with cloud-based navigation. Optimized charging stops based on traffic conditions and your battery's state of charge – ensuring you get to your destination in the fastest way possible.

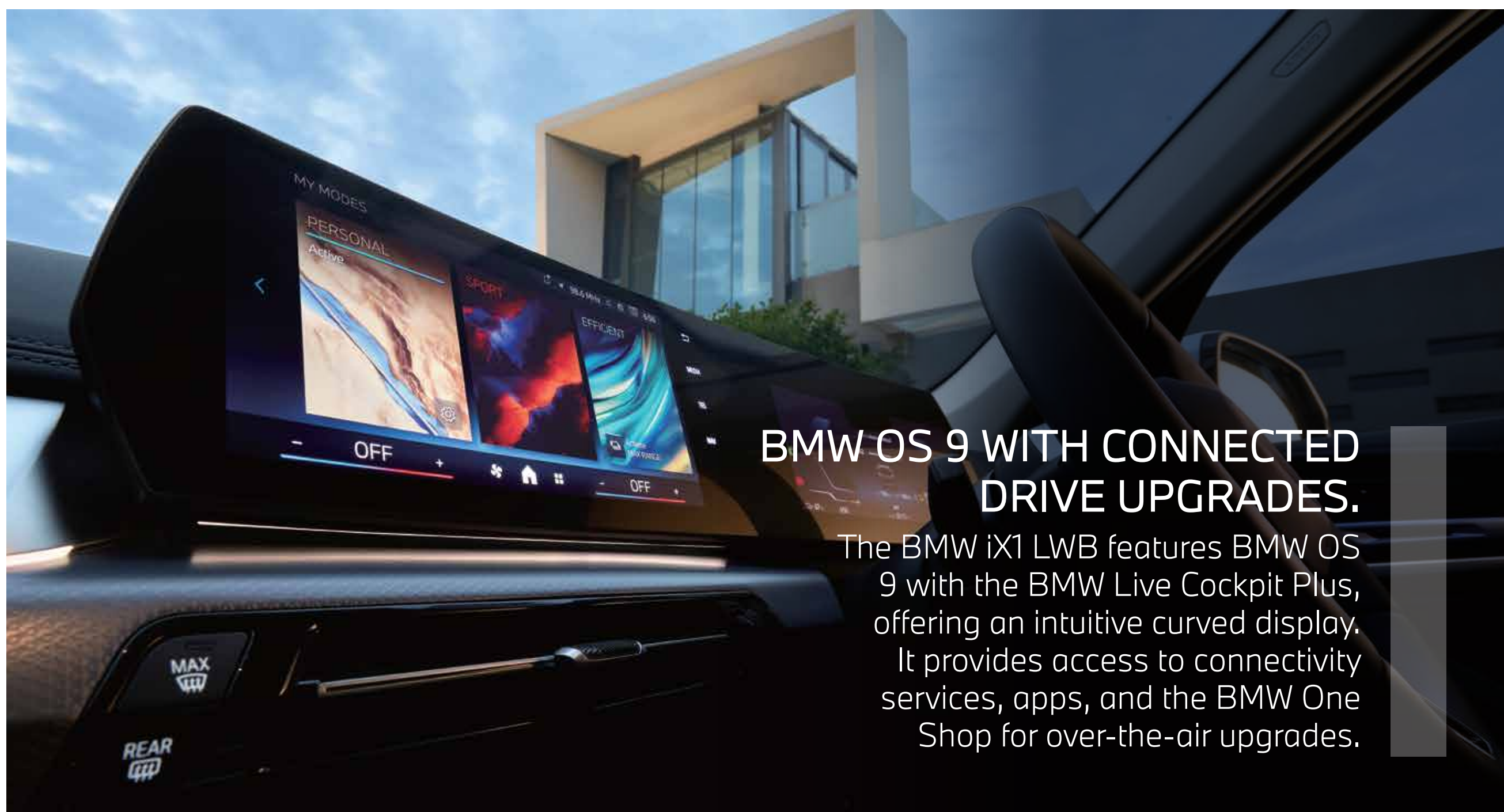
## CHARGING CONCIERGE.

No need to worry about charging your EV as BMW offers complete peace of mind with 24x7 Charging Concierge which includes trip planning, charging activation and payment of services availed.



OVER 5,000 CHARGING POINTS ALL ACROSS INDIA.

# INTERIOR HIGHLIGHTS.



## BMW OS 9 WITH CONNECTED DRIVE UPGRADES.

The BMW iX1 LWB features BMW OS 9 with the BMW Live Cockpit Plus, offering an intuitive curved display. It provides access to connectivity services, apps, and the BMW One Shop for over-the-air upgrades.



## HARMAN KARDON SOUND SYSTEM.

The Harman Kardon Sound System with 12 speakers producing 205 watts of output delivers a crystal clear, immersive sound. It is a concert-like experience, where rich tones and clarity make for a classy companion on your drives.



## VEGANZA UPHOLSTERY.

Crafted from sustainably sourced vegan leather, the Veganza upholstery proves that luxury and eco-consciousness can coexist. Soft to the touch and built to last, it elevates cabin comfort while reflecting a commitment to exceptional quality and sustainability.

# STYLE CHOICES.

---

## PAINT COLOURS



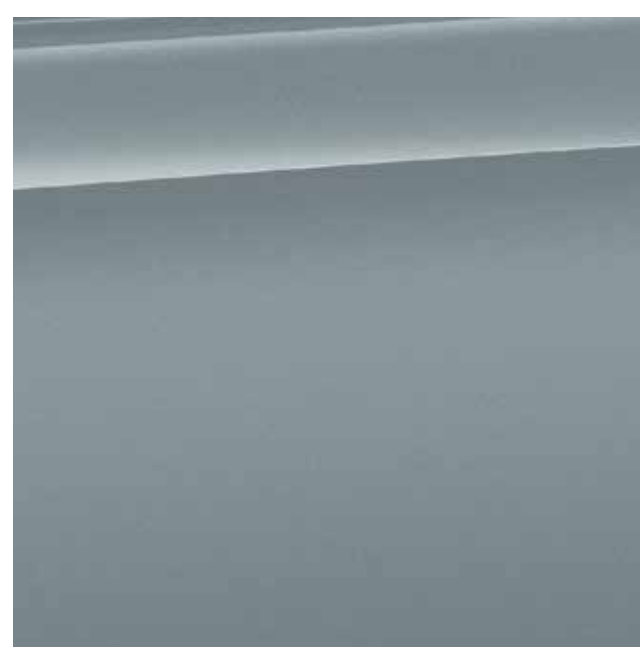
Mineral White  
(Metallic)



M Carbon Black  
(Metallic)



M Portimao Blue  
(Metallic)



Skyscraper Grey  
(Metallic)



Sparkling Copper  
Grey (Metallic)

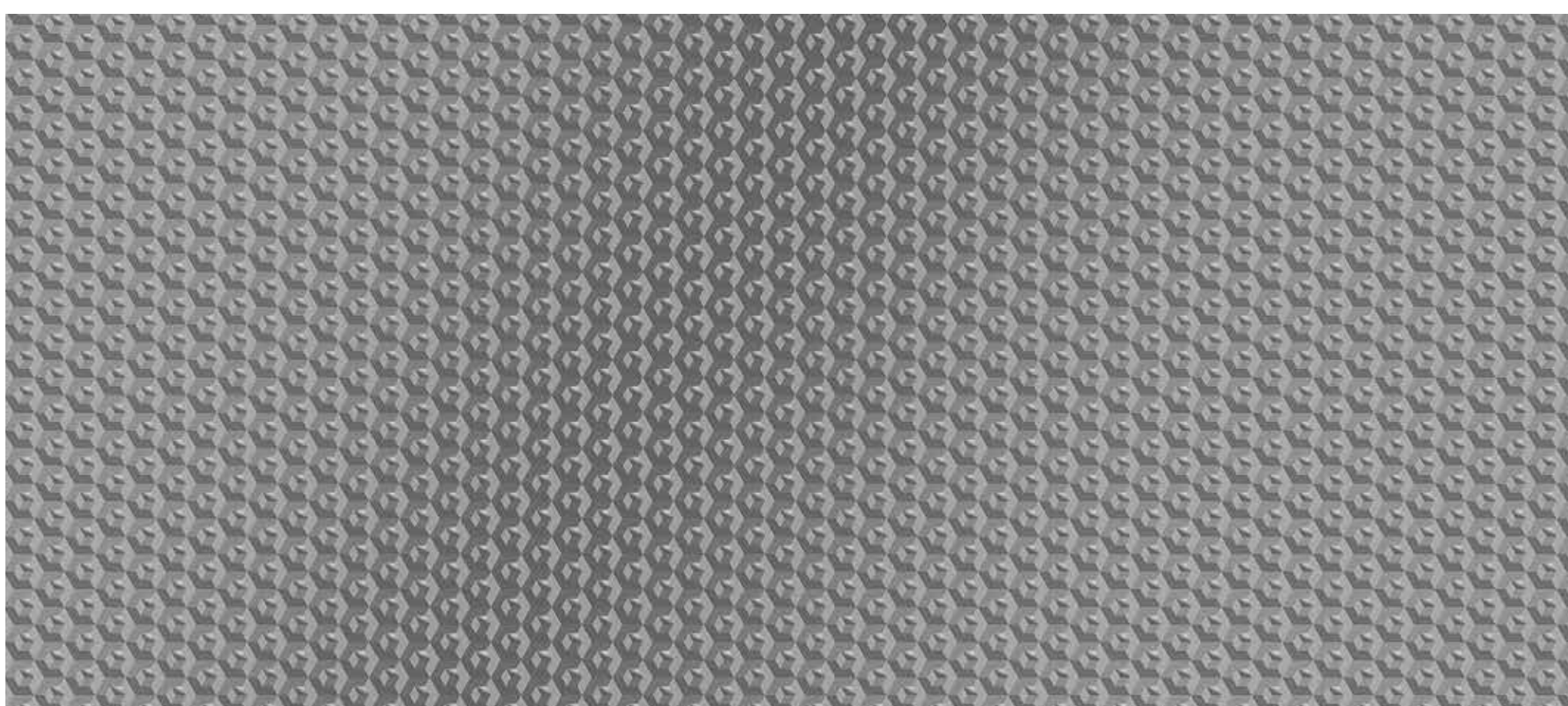
---

## UPHOLSTERY



Veganza Perforated Mocha.

## TRIM



Interior trim finishers Aluminium Hexacube.



# TECHNICAL INFORMATION.

Complete vehicle drive system		iX1 eDrive20L
Drive type		All-electric, Front-wheel drive
Power	kW (hp)	150 (204)
Torque	Nm	250
Driving performance		
Acceleration 0-100 km/h	s	8.6
Top speed (electric)	km/h	175
Electric Range MIDC	km	531
Dimensions		
Vehicle Length	mm	4616
Wheelbase	mm	2800

# OWNERSHIP BENEFITS.

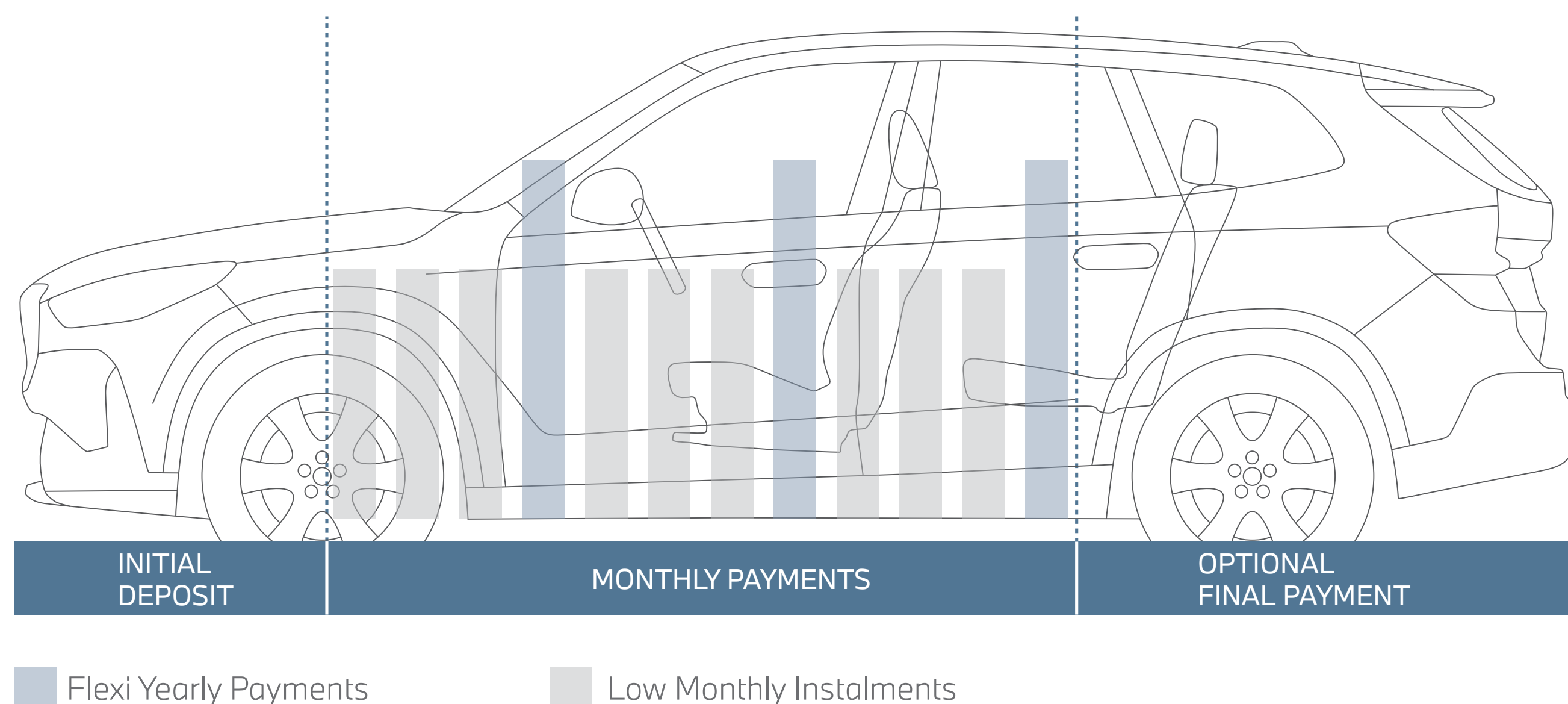
Battery Warranty - 8 Years / 1,60,000 km	■
Extended Car Warranty up to 10 years*	□

■ Standard □ Optional

\*STANDARD CAR WARRANTY IS 2 YEARS.

## BMW SMART FINANCE.

Tailor-made financing for individuals to unlock the joy of reduced monthly payments by flexibility to pay higher annual instalments during the loan tenure and enjoy peace of mind with assured buyback value for the vehicle.



Low Monthly Payments	End-of-Term Flexibility	Assured Buyback Value	Ease of Upgrade	Convenience of Payment Customization

\*T&Cs apply. Finance is at the sole discretion of BMW India Financial Services Private Limited.

# ROAD SIDE ASSISTANCE.

---

Customers can easily reach out for support with flat tire issues. A dedicated recovery vehicle will be dispatched to provide on-site puncture repair or assistance with a spare wheel replacement. In case of an emergency, customers can contact a toll-free number for mobile EV charging support. A charging vehicle equipped with fast-charging options can quickly provide a significant range boost to get you back on the road.





SCAN TO  
KNOW MORE